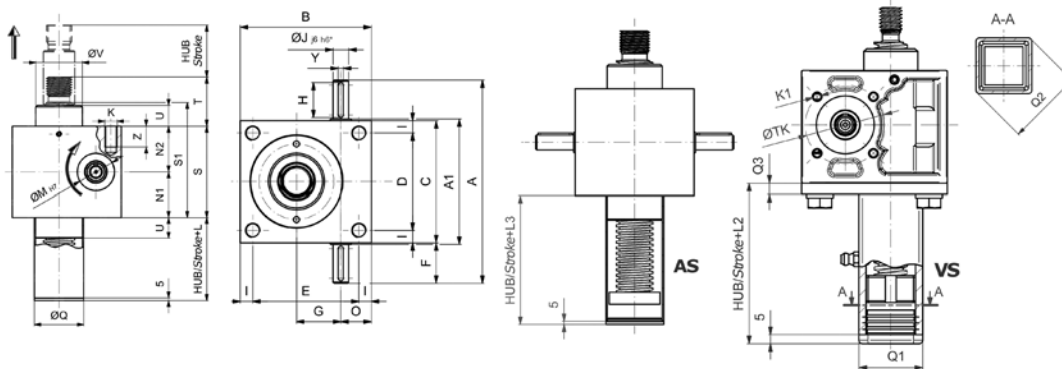
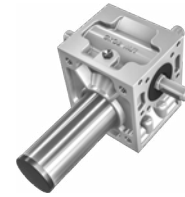


📍 LTK Quick-Link: [www.ltk.de/ba1](http://www.ltk.de/ba1)  
MEW Quick-Link: [www.mew.at/ba1](http://www.mew.at/ba1)

• HUBGETRIEBE GRUNDAUFFÜHRUNG BA1



Artikel	Trapezspindel	A	A1	B	C	D	E	F	G	H	I	Jj6	K	L	M	N1	N2	O	Q	S	S1	T	U	V	Y	Z
---------	---------------	---	----	---	---	---	---	---	---	---	---	-----	---	---	---	----	----	---	---	---	----	---	---	---	---	---

	[mm]																									
MJ0	16x4	94	56	64	54	38	48	20	22,62	16	8	9	M6	20	26	25	25	17,38	33,5	50	65	30	12	30	3	11
MJ1	18x4	120	75	80	72	52	60	24	25	18	10	10	M8	20	32	32	30	24	33,5	62	78	35	12	30	3	13
MJ2	20x4	140	89	100	85	63	78	27,5	32	20	11	14	M8	30	35	37,5	37,5	28	42	75	101	45	18	39	5	15
MJ3	30x6	195	109	130	105	81	106	45	45	36	12	16	M10	30	40	41	41	31	50	82	110	50	23	46	5	15
MJ4	40x7	240	150	180	145	115	150	47,5	63	36	15	20	M12	50	52	59	58	39	65	117	153	65	32	60	6	16
MJ5	55x9	300	170	200	165	131	166	67,5	71	56	17	25	M20	55	62	79	81	46	90	160	206	95	40	85	8	30
BJ1	60x9	325	200	210	195	155	170	65	71	56	20	25	M24	55	72	87	88	49	95	175	221	95	40	90	8	40
BJ2	70x10	355	225	240	220	170	190	67,5	80	56	25	30	M30	60	80	82	83	60	110	165	216	110	40	105	8	45
BJ3	80x10	355	225	240	220	170	190	67,5	80	56	25	30	M30	60	80	82	83	60	125	165	216	110	40	120	8	45
BJ4	100x10	380	254	290	250	190	230	65	100	56	30	35	M36	65	85	106	114	65	150	220	282	140	50	145	10	54
BJ5	120x14	500	305	360	300	230	290	100	135	90	35	48	M42	85	90	133	133	75	180	266	348	200	60	170	14	80

Artikel	Ausdrehsicherung (AS)		Verdrehsicherung mit Vierkantröhr (VS)			Bohrbild für Motorglocke	
	L3	L2	Q1	Q2	Q3	TK	6xK1

	[mm]							
MJ0		43	52	35	50	6	35	M5
MJ1		46	53	35	50	6	44	M5
MJ2		56	64	45	64	6	50	M6
MJ3		64	73	50,5	71	8	52	M6
MJ4		88	92	65	92	10	-	-
MJ5		106	102	90	128	10	-	-
BJ1		106	108	100	142	10	-	-
BJ2		113	118	120	170	10	-	-
BJ3		113	118	120	170	10	-	-
BJ4		124	132	150	213	10	-	-
BJ5		152	160	180	255	10	-	-